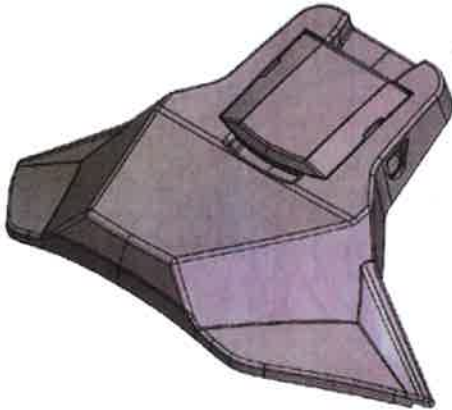


Pacific Helmets Cap Lamp Bracket Assembly Instructions:



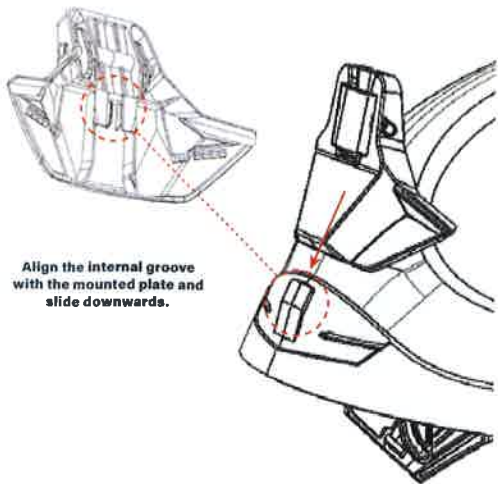
B2152062



B2152063

Part no. B2152062

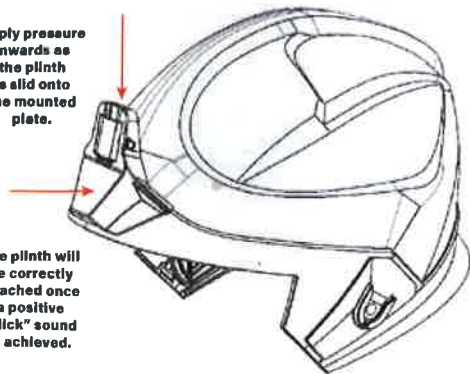
1.



2.

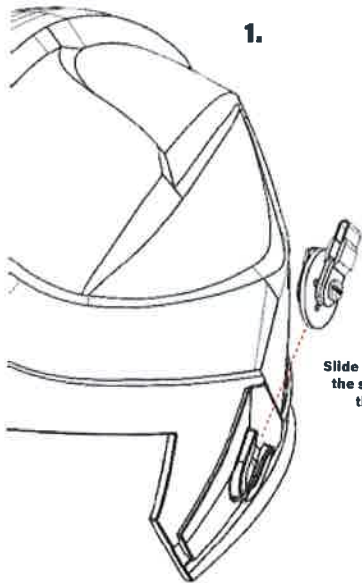
Apply pressure inwards as the plinth is slid onto the mounted plate.

The plinth will be correctly attached once a positive "click" sound is achieved.



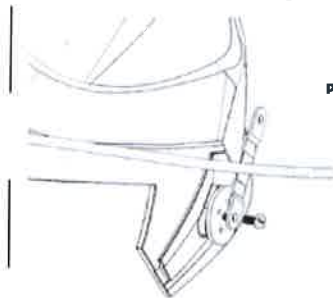
Part no. B2152063

1.

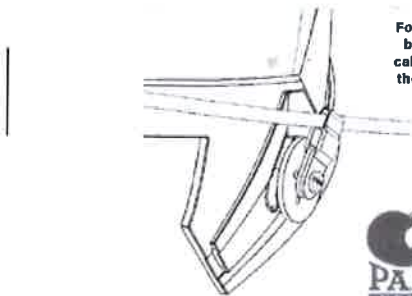


Slide the clip on to
the side plate of
the shell.

2.



Unscrew the bolt and
position the cable halfway
up the flexible band.



Fold the flexible
band over the
cable and fasten
the screw tight.

www.pacifichelmets.com

